

S Screen Naturals™

Decorative | 5% openness



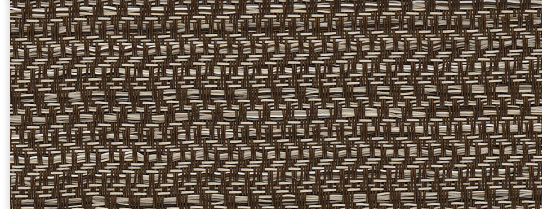
000PYR
Pyrenees



000SIE
Sierra



000OLY
Olympus



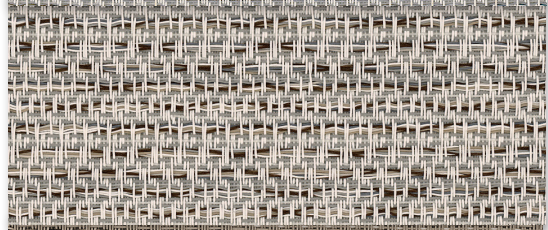
000APP
Appalachian

000AND
Andes

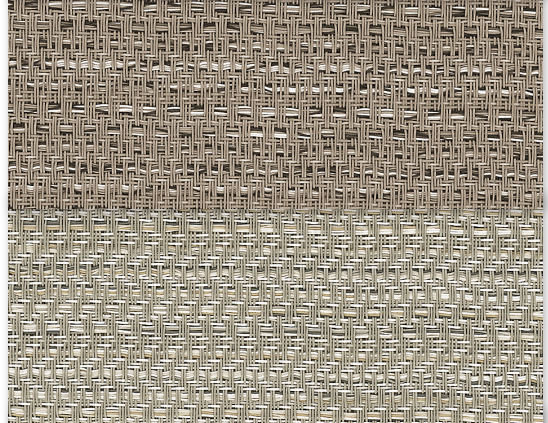
000ADI
Adirondack



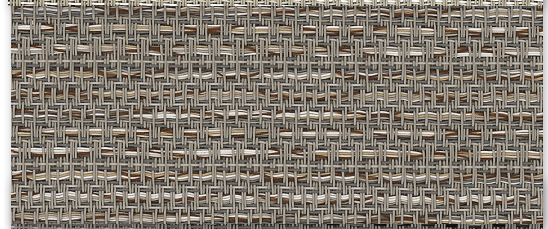
000DEN
Denali



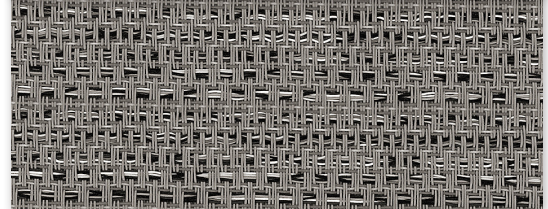
000MAT
Matterhorn



000RAI
Rainier



000CAS
Cascade



000SHA
Shasta

000EVE
Everest

Specifications

Item Number	001705
Product Category	Decorative
Fabric Style	Fancy Weave
Openness Factor	5%
Composition	33.6% Fiberglass / 59.6% Vinyl / 6.8% Polyester
UV Blockage	Approximately 95%
Standard Packaging	Rolls of 23 ly (21 lm)
Width	98 in (250 cm)
Weight	15.0 oz/yd ² (510 g/m ²) ±5%
Thickness	0.042 in (1.06 mm) ±5%

Classifications

Fire Classifications	NFPA 701-10 TM#1, California U.S. Title 19, CAN/ULC-S109-03 Small Flame Test
Bacterial and Fungal Resistance Environment	ASTM E2180, ASTM G21 RoHS - Lead Free, GREENGUARD Gold
Acoustical Performance	NRC 0.05, SAA: 0.07

Fabrication

Cutting: Cold, Ultrasonic or Crush | **Welding:** Radio Frequency, High Frequency, Impulse, Hot Air or Wedge
We recommend testing all cutting and welding methods prior to use to confirm they meet your individual fabric specifications.

S Screen Naturals™

ITEM COLOR

000PYR	Pyrenees
000SIE	Sierra
000OLY	Olympus
000APP	Appalachian
000AND	Andes
000ADI	Adirondack
000DEN	Denali
000MAT	Matterhorn
000RAI	Rainier
000CAS	Cascade
000SHA	Shasta
000EVE	Everest

FABRIC

thermal Total Solar			optical	
Rs %	As %	Ts %	Rv %	Tv %
63	18	19	68	18
46	39	15	48	13
35	51	14	36	12
40	46	14	41	13
18	74	8	19	8
20	71	9	21	9
58	26	16	63	15
54	30	16	58	15
37	51	12	38	10
43	45	12	46	11
35	54	11	36	9
31	59	10	32	9

FABRIC + GLASS

commercial SHGC% Improvement		residential SHGC	
Interior	Exterior	Interior	Exterior
53	74	0.32	0.17
39	76	0.41	0.15
32	76	0.46	0.16
34	76	0.44	0.16
24	79	0.53	0.14
24	79	0.52	0.14
47	76	0.34	0.15
45	76	0.37	0.16
34	79	0.45	0.14
37	79	0.42	0.14
32	79	0.46	0.14
29	79	0.47	0.14

Warranty

5 Year Exterior & 10 Year Interior

Care & Handling

Remove dust with vacuum cleaner or compressed air. Do not scrub. Do not use solvents or any abrasive substance which might damage the coating of the fabric. Clean with a sponge or a soft brush dipped in soapy water using mild detergent. Rinse with clean water. Leave the blind down until completely dry. You can also very gently rub the fabric with a clean white pencil eraser to remove small stains.

Mermet Corporation
 5970 N. Main Street ■ Cowpens, SC 29330
 Ph 1.866.902.9647 ■ info@mermetusa.com

The fabric performance tests were conducted in accordance with ASTM E891 & ASTM E903-96: Total Solar Transmittance (Ts), Total Solar Reflectance (Rs), Total Solar Absorbance (As), Visible Reflectance (Rv), and Visible Transmission (Tv). Glass performance tests for Solar Heat Gain Coefficient (SHGC) were conducted using the Lawrence Berkeley National Laboratory Window NFRC certified software. SHGC % improvement for commercial applications is based on a standard commercial glass makeup of Double Glazing 6 mm / 1/2" air / 6 mm with low E on surface #2. SHGC for residential applications is based on a default residential glass makeup of 3mm clear glass / 1/2" air / 3mm clear glass. Results for SHGC were obtained using the center of glass. Acoustical performance was tested in accordance with ASTM C423-09a: NRC is Noise Reduction Coefficient, SAA is Sound Absorption Average. For up-to-date test results, performance specifications and larger samples, contact the Mermet Technical Department at: www.mermetusa.com