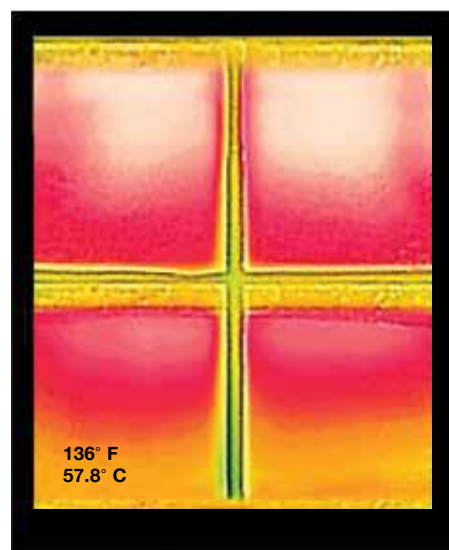


# E Screen | WITH **KOOLBLACK** TECHNOLOGY

## Reduced Cooling Costs & Improved Comfort

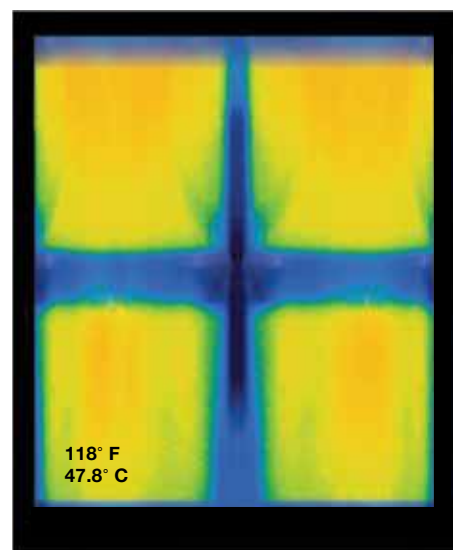
With the glare control and view-through benefits of dark fabrics

KOOLBLACK® Technology eliminates the trade-offs between aesthetics and performance by incorporating near-infrared, heat reflective properties into dark color screen fabrics. This feature, coupled with the other benefits of dark colored fabrics, provides excellent contrast for a clear view through, uniformed exterior building design, maximized energy savings and optimized occupant comfort.



Standard Dark Screen Fabrics

- high contrast for clear & sharp view through
- coordinated exterior building design
- exceptional glare control



E Screen with KOOLBLACK® Technology

- same great features as standard dark screen fabrics
- improved near-infrared reflectance of 64% in comparison to 3% for conventional charcoal/charcoal fabric
- excellent acoustic absorption with an NRC up to 0.45
- improved heat control and energy savings

## Total Screen Benefits

Only E Screen with KOOLBLACK® Technology can achieve all screen benefits

- increased IR reflectance = less re-radiated heat = lower cooling costs & enhanced occupant comfort
- superior view through and glare control
- coordinated exterior building design and aesthetics when incorporated with glazing



Sun Control Textiles™

More information on Mermet's full line of KOOLBLACK® Technology fabrics, E Screen with KOOLBLACK® Technology and T Screen with KOOLBLACK® Technology, can be found at [www.mermetusa.com](http://www.mermetusa.com).



High Performance | 1% 3% 5% openness

# E SCREEN WITH **KOOLBLACK** TECHNOLOGY

## Specifications

Item Number

**KOOLBLACK:** 1% 007701 | 3% 007703 | 5% 007705  
Original: 1% 007501 | 3% 007503 | 5% 007505

Product Category

**E Screen with KOOLBLACK:** High Performance  
E Screen Original: Conventional

Fabric Style

Basketweave

Openness Factor

1%, 3% & 5%

Composition

36% Fiberglass | 64% Vinyl

UV Blockage

Approximately 95%-99%

Standard Packaging

Rolls of 30 ly (27 lm)

Width

**KOOLBLACK:** 98 in (250 cm), 122 in (310 cm)  
Original: 78 in (200 cm), 98 in (250 cm), 122 in (310 cm)

Weight

**KOOLBLACK:** 1% 12.95 oz/yd² (439 g/m²)±5% | 3% 11.3 oz/yd² (382 g/m²)±5% | 5% 10.6 oz/yd² (358 g/m²)±5%  
Original: 1% 13.3 oz/yd² (452 g/m²)±5% | 3% 11.6 oz/yd² (393 g/m²)±5% | 5% 10.7 oz/yd² (363 g/m²)±5%

Thickness

**KOOLBLACK:** 1% 0.021 in (0.53 mm)±5% | 3% 0.020 in (0.51 mm)±5% | 5% 0.019 in (0.47 mm)±5%  
Original: 1% 0.020 in (0.52 mm)±5% | 3% 0.017 in (0.43 mm)±5% | 5% 0.016 in (0.41 mm)±5%

## Classifications

Fire Classifications

NFPA 701-10 TM#1, California U.S. Title 19; CAN/ULC-S109-03 Small & Large Flame Test

Bacterial Resistance

ASTM E2180, ASTM G21

Environment

RoHS - Lead Free, GREENGUARD Gold

Acoustic

**KOOLBLACK:** 1% NRC 0.45, SAA: 0.46 | 3% NRC 0.15, SAA: 0.17 | 5% NRC 0.10, SAA: 0.12  
Original: 1% NRC 0.40, SAA: 0.40 | 3% NRC 0.15, SAA: 0.17 | 5% NRC 0.10, SAA: 0.12

## Fabrication

**Cutting:** Cold, Ultrasonic or Crush | **Welding:** Radio Frequency, High Frequency, Impulse, Hot Air or Wedge  
We recommend testing all cutting and welding methods prior to use to confirm they meet your individual fabric specifications.

## E Screen WITH **KOOLBLACK** TECHNOLOGY

ITEM	COLOR	Total Solar   thermal performance			optical performance			SHGC   % Improvement														
		Rs   %	As   %	Ts   %	Rv   %	Tv   %																
035035	Charcoal/Charcoal	64	61	60	35	34	33	53	49	49	12	17	18	9	10	10	2	6	6	18	16	16
00K122	Charcoal/Grey-Stone	63	60	58	38	38	36	50	46	45	12	16	19	17	19	18	3	7	9	24	24	21
035131	Charcoal/Grey	67	65	62	40	40	38	49	46	45	11	14	17	16	18	17	2	5	7	24	24	21
035032	Charcoal/Cocoa	64	61	57	36	35	32	52	48	49	12	17	19	11	12	11	2	6	7	21	16	16
035071	Charcoal/Apricot	62	58	59	39	38	37	47	44	42	14	18	21	19	22	19	3	6	9	24	21	18

## E Screen Original

ITEM	COLOR	Total Solar   thermal performance			optical performance			SHGC   % Improvement														
		Rs   %	As   %	Ts   %	Rv   %	Tv   %																
030030	Charcoal/Charcoal	3	5	6	4	5	6	95	91	90	1	4	4	4	5	5	1	4	4	13	13	13
00M122	Charcoal/Grey-Stone	11	13	11	11	13	12	87	80	79	2	7	9	11	13	12	2	6	9	18	18	18
030001	Charcoal/Grey	9	11	11	9	10	10	88	85	83	3	5	7	8	10	10	2	5	7	16	16	16
030061	Charcoal/Cocoa	5	7	6	5	7	6	93	89	87	2	4	7	5	7	6	2	3	7	16	13	13
030071	Charcoal/Apricot	13	18	15	13	18	15	86	75	78	1	7	7	14	18	16	1	7	6	18	18	18

## Warranty

5 Year Exterior & 10 Year Interior

## Care & Cleaning

Remove dust with vacuum cleaner or compressed air. Do not scrub. Do not use solvents or any abrasive substance which might damage the coating of the fabric. Clean with a sponge or a soft brush dipped in soapy water using mild detergent. Rinse with clean water. Leave the blind down until completely dry. You can also very gently rub the fabric with a clean white pencil eraser to remove small stains.

Mermet Corporation  
5970 N. Main Street ■ Cowpens, SC 29330  
Ph 1.866.902.9647 ■ [info@mermetusa.com](mailto:info@mermetusa.com)

[mermetusa.com](http://mermetusa.com)

The fabric performance tests were conducted in accordance with ASTM E891 & ASTM E903-96: Total Solar Transmittance (Ts), Total Solar Reflectance (Rt), Solar Reflectance in Infrared (Rsi IR), Total Solar Absorbance (As), Visible Reflectance (Rv), and Visible Transmittance (Tv). Glass performance tests for Solar Heat Gain Coefficient (SHGC) were conducted using the Lawrence Berkeley National Laboratory Window 7.3 NFRC certified software. SHGC % improvement for commercial applications is based on a standard commercial glass makeup of Double Glazing 6 mm / 1/8" air / 6 mm with low E on surface #2. Results for SHGC were obtained using the center of glass. Acoustical performance was tested in accordance with ASTM C423-09a: NRC is Noise Reduction Coefficient, SAA is Sound Absorption Average. For residential SHGC data and the most up-to-date test results, performance specifications, and larger samples, contact the Mermet Technical Department: [www.mermetusa.com](http://www.mermetusa.com)

© 2017, Mermet Corporation. All right reserved, US and Foreign patents pending.

09.17.V1



Sun Control Textiles™

# E Screen | WITH **KOOLBLACK** TECHNOLOGY

High Performance | 1% 3% 5% openness



## Perfect Commercial Solution

A combination of E Screen with KOOLBLACK® Technology & E Screen Original

**where** Southern & Western Exposures  
**what** E Screen with KOOLBLACK® Technology  
**why** Improved Comfort & Energy Savings

**where** Northern & Eastern Exposures  
**what** E Screen Original  
**why** Value Offering & Seamless Coordination

The combination of E Screen with KOOLBLACK® Technology and E Screen Original, in coordinating colors, achieves a seamless exterior design appearance and cost savings solution for commercial applications.

### Benefits of dark screens with KOOLBLACK® Technology

- excellent glare control
- crisp, clear view to the outside
- coordinated exterior building design
- reflects NIR solar energy
- improved comfort
- energy savings



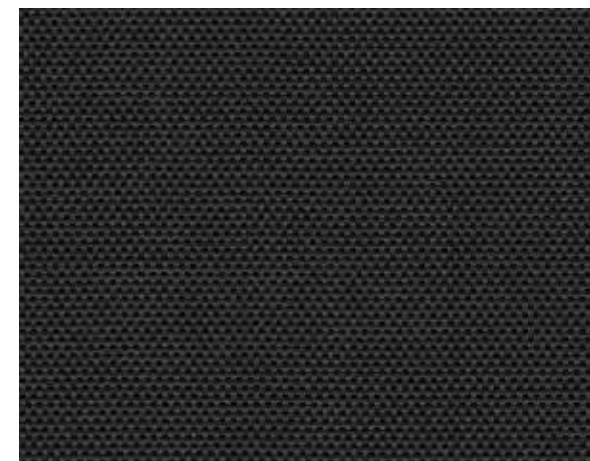
### Benefits of standard dark screen fabrics

- excellent glare control
- crisp, clear view to the outside
- coordinated exterior building design

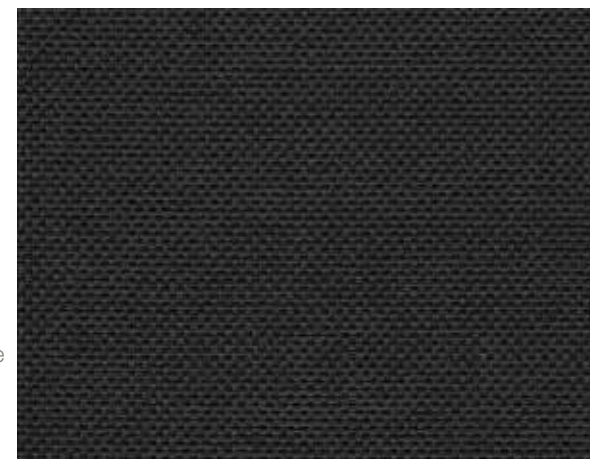


# E Screen

Conventional | 1% 3% 5% openness



1% 035035 | Charcoal/Charcoal



00K122 Charcoal/Grey-Stone

3% 035035 | Charcoal/Charcoal

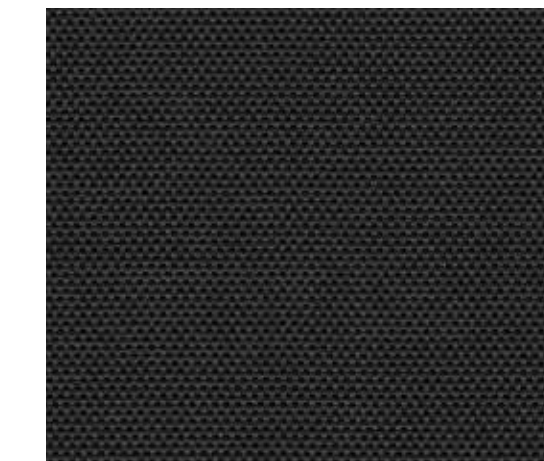
035131 Charcoal/Grey



035032 Charcoal/Cocoa

035071 Charcoal/Apricot

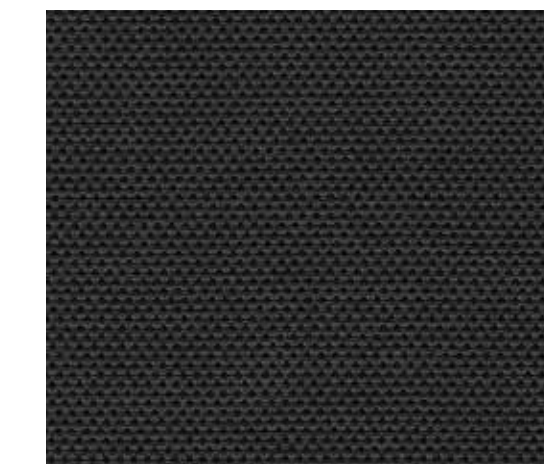
5% 035035 | Charcoal/Charcoal



1% 030030 | Charcoal/Charcoal



3% 030030 | Charcoal/Charcoal



5% 030030 | Charcoal/Charcoal



00M122 Charcoal/Grey-Stone

030001 Charcoal/Grey

030061 Charcoal/Cocoa

030071 Charcoal/Apricot

Fabrics sampled on the left are 5% openness. All colors are available in 1%, 3% and 5% openness factors.

Fabrics sampled on the right are 5% openness. All colors are available in 1%, 3% and 5% openness factors. Visit [www.mermetusa.com](http://www.mermetusa.com) to view complete color line and specifications of E Screen Original.