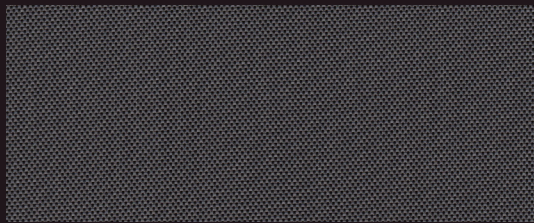


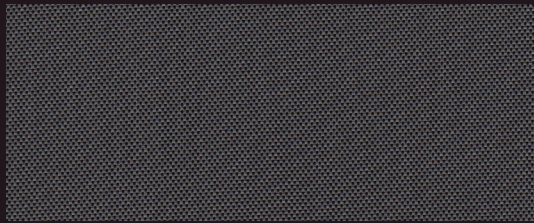
E Screen™ & E Screen™ WITH KOOLBLACK™ TECHNOLOGY

High Performance | 0.5% 1% 3% 5% 10% openness



0.5%

Charcoal/Grey



1%

Charcoal/Grey



3%

Charcoal/Grey



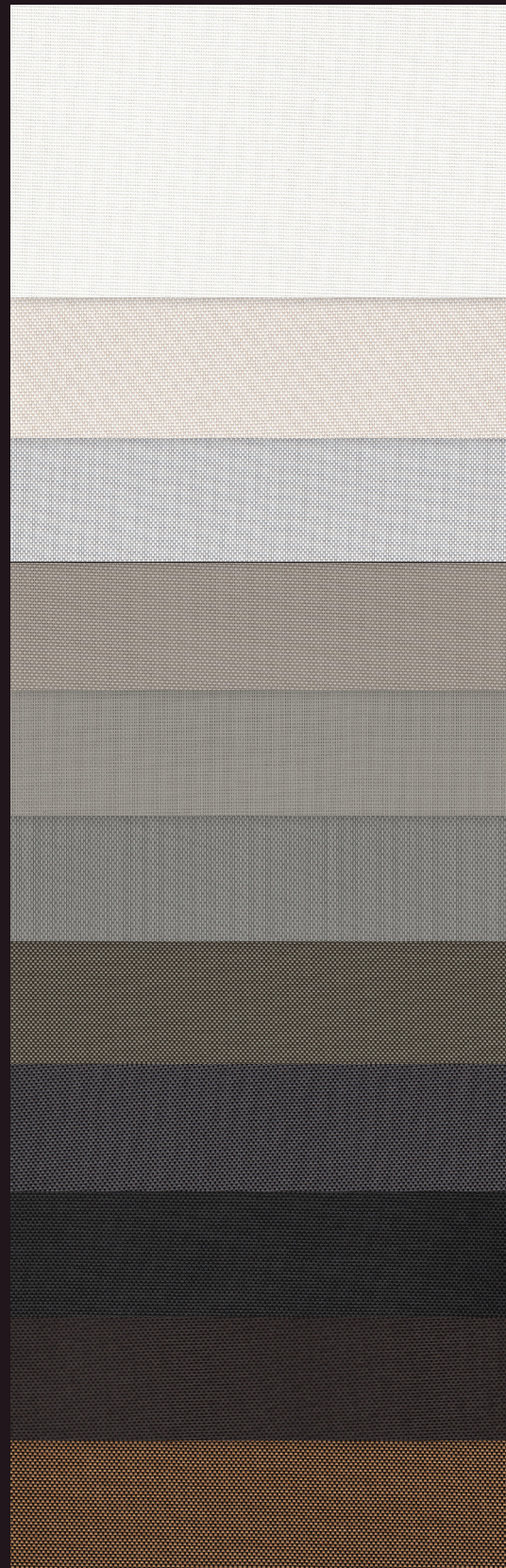
5%

Charcoal/Grey



10%

Charcoal/Grey



White/White

White/Linen

White/Pearl

Pearl/Linen

Pearl/Pearl

Pearl/Grey

Charcoal/
Grey-Stone*

Charcoal/
Grey*

Charcoal/
Charcoal*

Charcoal/
Cocoa*

Charcoal/
Apricot*

*Available in KOOLBLACK® Technology.

Fabrics sampled on the waterfall are 3% openness.

Fabric Specifications

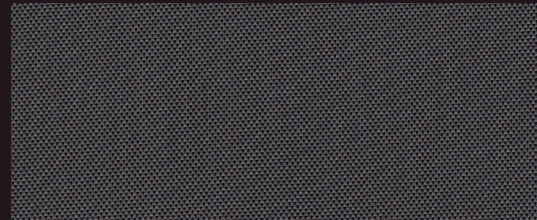
Fabric Style	UV Blockage	Composition	Standard Roll Length	Warranty
Basketweave	Approximately 90%-99.5%	36% Fiberglass, 64% Vinyl	34 ly (31 lm)	5 Year Exterior 10 Year Interior

E Screen™

Available Colors

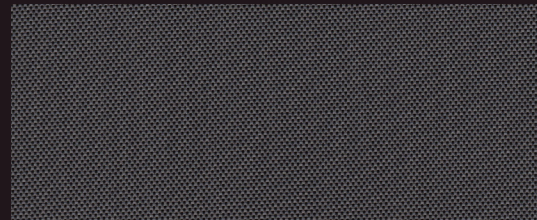
White/White	White/Linen	White/Pearl
Pearl/Linen	Pearl/Pearl	Pearl/Grey
Charcoal/Grey-Stone	Charcoal/Grey	Charcoal/Charcoal
Charcoal/Cocoa	Charcoal/Apricot	

Openness	Item No.	Available Widths			Weight oz/yd ² (±5%)	Thickness inches (±5%)
		78"	98"	122"		
0.5%	007500			•	13.5	0.023
1%	007501	•	•	•	13.3	0.020
3%	007503	•	•	•	11.6	0.017
5%	007505	•	•	•	10.7	0.016
10%	007510	•	•	•	10.3	0.020



0.5%

Charcoal/Grey



1%

Charcoal/Grey

E Screen™ with KOOLBLACK TECHNOLOGY

Available Colors

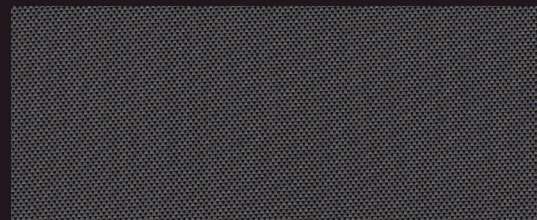
Charcoal/Grey-Stone	Charcoal/Grey	Charcoal/Charcoal
Charcoal/Cocoa	Charcoal/Apricot	

Openness	Item No.	Available Widths			Weight oz/yd ² (±5%)	Thickness inches (±5%)
		78"	98"	122"		
0.5%	007700			•	14.6	0.025
1%	007701		•	•	12.9	0.021
3%	007703		•	•	11.3	0.020
5%	007705		•	•	10.6	0.019
10%	007710		•	•	10.6	0.021



3%

Charcoal/Grey



5%

Charcoal/Grey



10%

Charcoal/Grey



Looking for fenestration data?
Scan here for complete fabric resources.

MermetUSA.com



Mermet Corporation

5970 N. Main Street
1.866.902.9647

Cowpens, SC 29330
info@MermetUSA.com

Product performance and specification data is subject to change, visit www.Mermetusa.com for the most current information