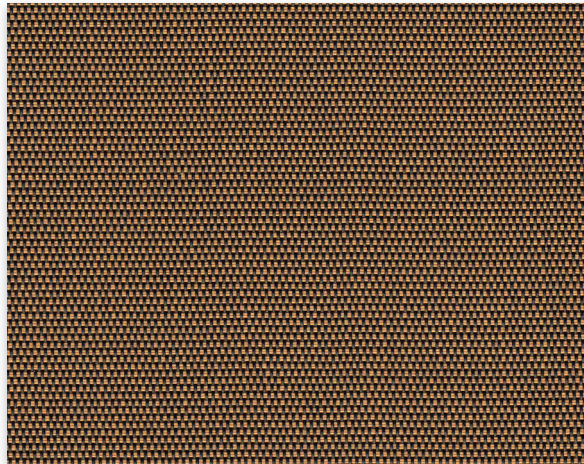
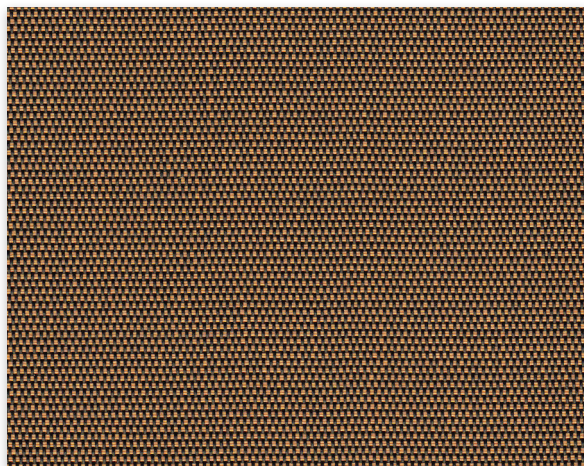


# M Screen™

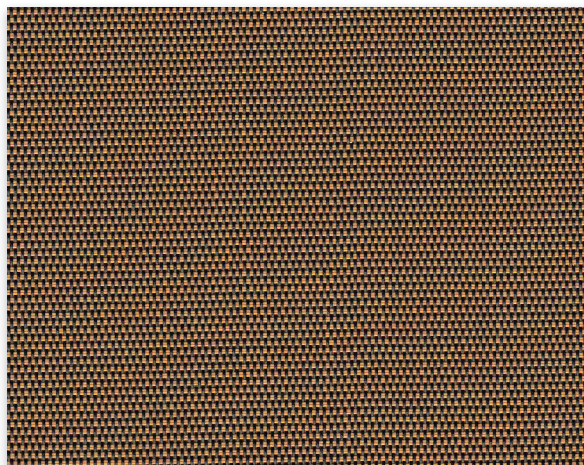
Conventional | 1% 3% 5% openness



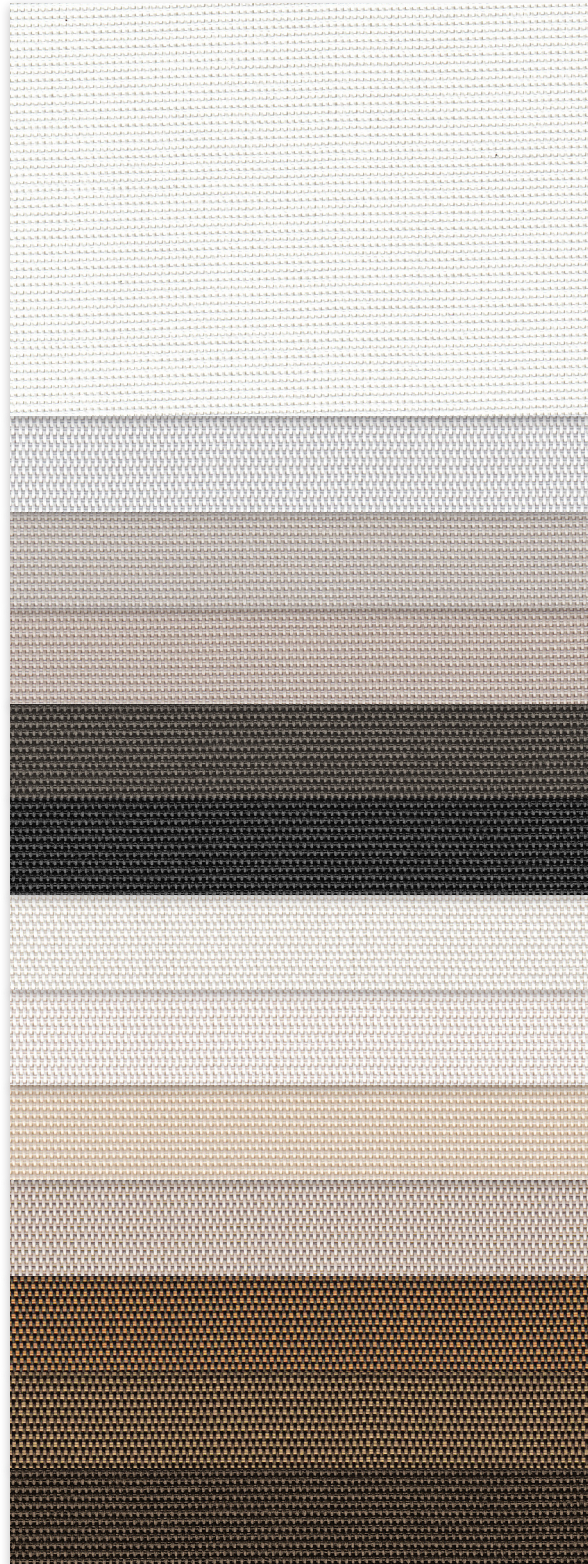
1% 030071 | Charcoal/Apricot



3% 030071 | Charcoal/Apricot



5% 030071 | Charcoal/Apricot



002002  
White/White

002007  
White/Pearl

007020  
Pearl/Linen

007007  
Pearl/Pearl

030001  
Charcoal/Grey

030030  
Charcoal/Charcoal

002022  
White/Stone

002020  
White/Linen

020022  
Linen/Stone

00M166  
Linen/Sable-Cocoa

030071  
Charcoal/Apricot

030010  
Charcoal/Sable

030061  
Charcoal/Cocoa

Fabrics sampled on waterfall are 5% openness.



# Fabric Specifications

Fabric Style	UV Blockage	Composition	Standard Roll Length	Warranty
Rib Weave	Approximately 95%-99%	36% Fiberglass, 64% Vinyl	30 ly (27 lm)	5 Year Exterior 10 Year Interior

## M Screen™

### Available Colors

White/White	White/Pearl	Pearl/Linen
Pearl/Pearl	Charcoal/Grey	Charcoal/Charcoal
White/Stone	White/Linen	Linen/Stone
Linen/Sable-Cocoa	Charcoal/Apricot	Charcoal/Sable
Charcoal/Cocoa		

Openness	Item No.	Available Widths			Weight oz/yd <sup>2</sup> (±5%)	Thickness inches (±5%)
		78"	98"	122"		
1%	008501		•	•	13.12	0.022
3%	008503		•	•	12.70	0.022
5%	008505		•	•	11.30	0.022



Looking for fenestration data?  
Scan here for complete fabric resources.

[MermetUSA.com](http://MermetUSA.com)



**Mermet Corporation**

5970 N. Main Street  
1.866.902.9647

Cowpens, SC 29330  
info@MermetUSA.com

Product performance and specification data is subject to change, visit [www.MermetUSA.com](http://www.MermetUSA.com) for the most current information