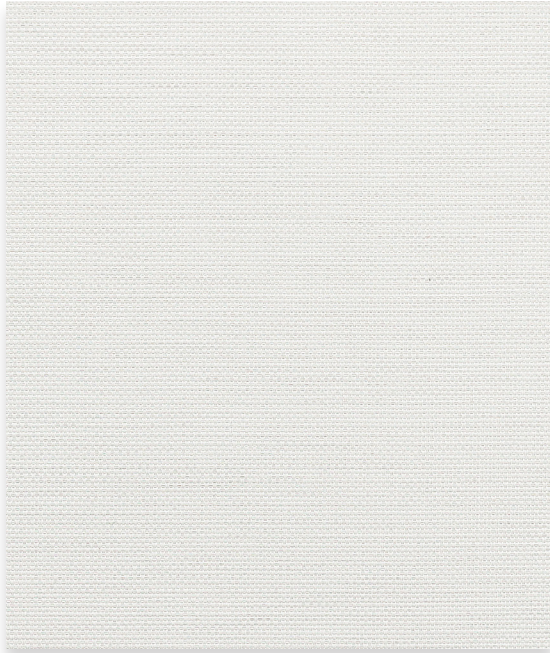
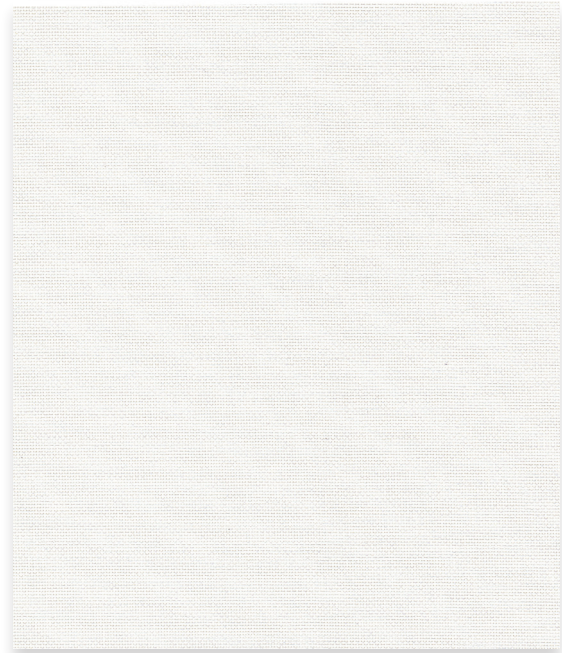


E Screen™ **LOWGLARE™**

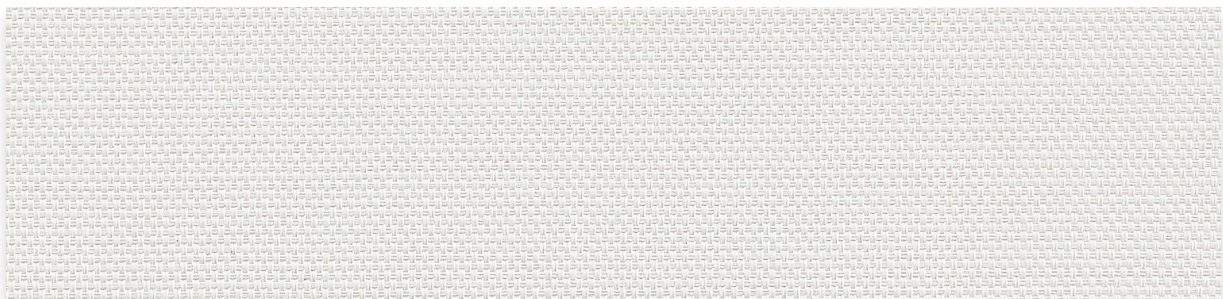
High Performance | 1% 3% 5% openness



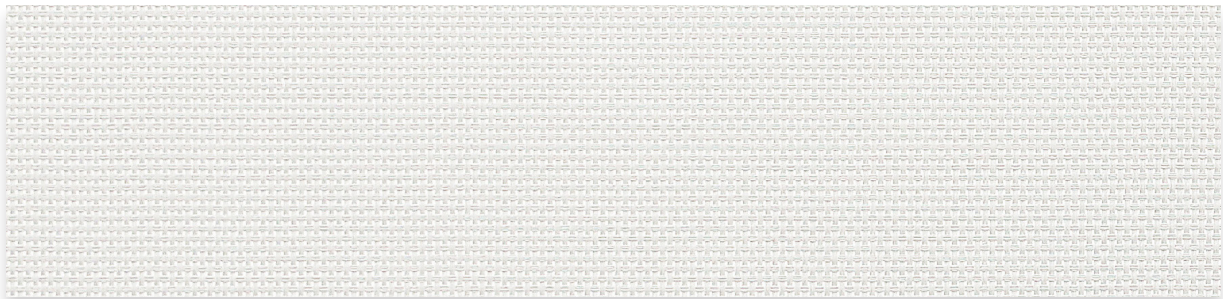
E Screen™ **LOWGLARE™** 3%
Dove



E Screen™ 3% **Standard**
White/White



E Screen™ **LOWGLARE™** 1%
Dove



E Screen™ **LOWGLARE™** 5%
Dove

LOWGLARE™

High-performance white fabric that reduces harsh glare while retaining the key benefits of traditional white screens.

Benefits of white fabrics

- Outstanding heat reflectance
- Superior thermal control
- Enhanced privacy

Benefits of LOWGLARE™

- ✓ Outstanding heat reflectance
- ✓ Superior thermal control
- ✓ Enhanced privacy
- ✓ Significantly reduced glare
- ✓ Increased viewing comfort
- ✓ Reduced eye strain

Standard

E Screen™ 1% White/White

Tv (%)	11%
Rs (%)	75%



LOWGLARE™

E Screen™ 1% Dove

Tv (%)	5%
Rs (%)	75%

E Screen™ 3% White/White

Tv (%)	13%
Rs (%)	73%



E Screen™ 3% Dove

Tv (%)	8%
Rs (%)	73%

E Screen™ 5% White/White

Tv (%)	17%
Rs (%)	71%



E Screen™ 5% Dove

Tv (%)	12%
Rs (%)	70%

Understand the difference



Visible Light Transmission (Tv)

Glare is measured by total Tv (%). Lowering Tv (%) by at least 5% improves visual comfort by blocking uncomfortable glare. Significant glare control is achieved at a Tv of 8% or less.



Solar Reflection (Rs)

Maintaining a high Rs (%) is required for excellent Heat Control. Solar Reflection above 70% improves thermal conditions and may provide energy savings.

Fabric Specifications

Fabric Style	UV Blockage	Composition	Standard Roll Length	Warranty
Basketweave	Approximately 95%-99%	36% Fiberglass, 64% Vinyl	34 ly (31 lm)	5 Year Exterior 10 Year Interior

8.50"

E Screen™ LOWGLARE™

Available Color

Dove

Openness	Item No.	Width	Weight oz/yd ²	Thickness inches
1%	007601	122"	13.30	0.020
3%	007603	122"	11.60	0.017
5%	007605	122"	10.70	0.016



Before: Unshaded Window



After: LOWGLARE™ Fabric

*Safe FR: Mermet's **SFR** certification means fabrics are clear of hazardous chemicals such as Antimony Trioxide and other toxic substances, while maintaining commercial fire ratings



Scan here for E Screen™ LOWGLARE™ resources & technical data.

MermetUSA.com



Mermet Corporation

5970 N. Main Street
1.866.902.9647

Cowpens, SC 29330
info@MermetUSA.com

Product performance and specification data is subject to change, visit www.MermetUSA.com for the most current information