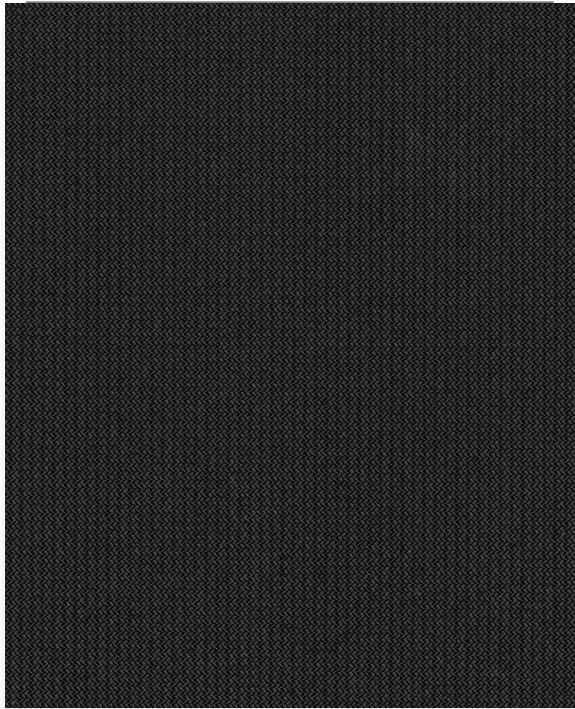


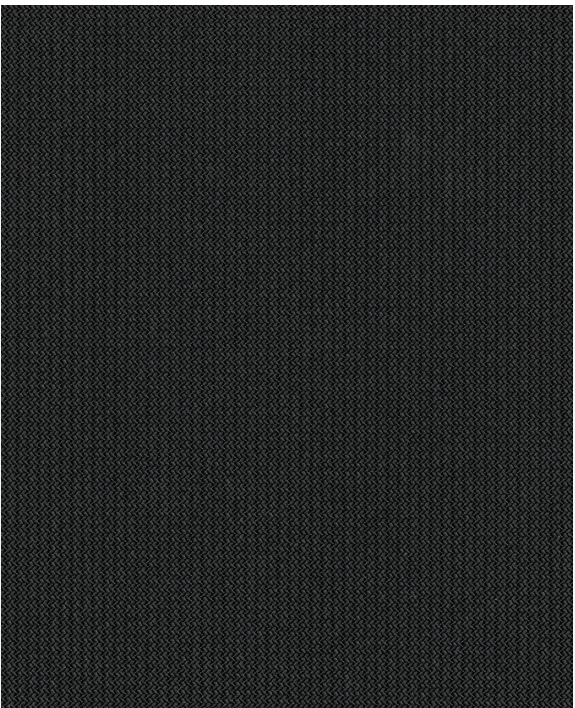
# GreenScreen Revive®

Sustainable | 1% 5% openness



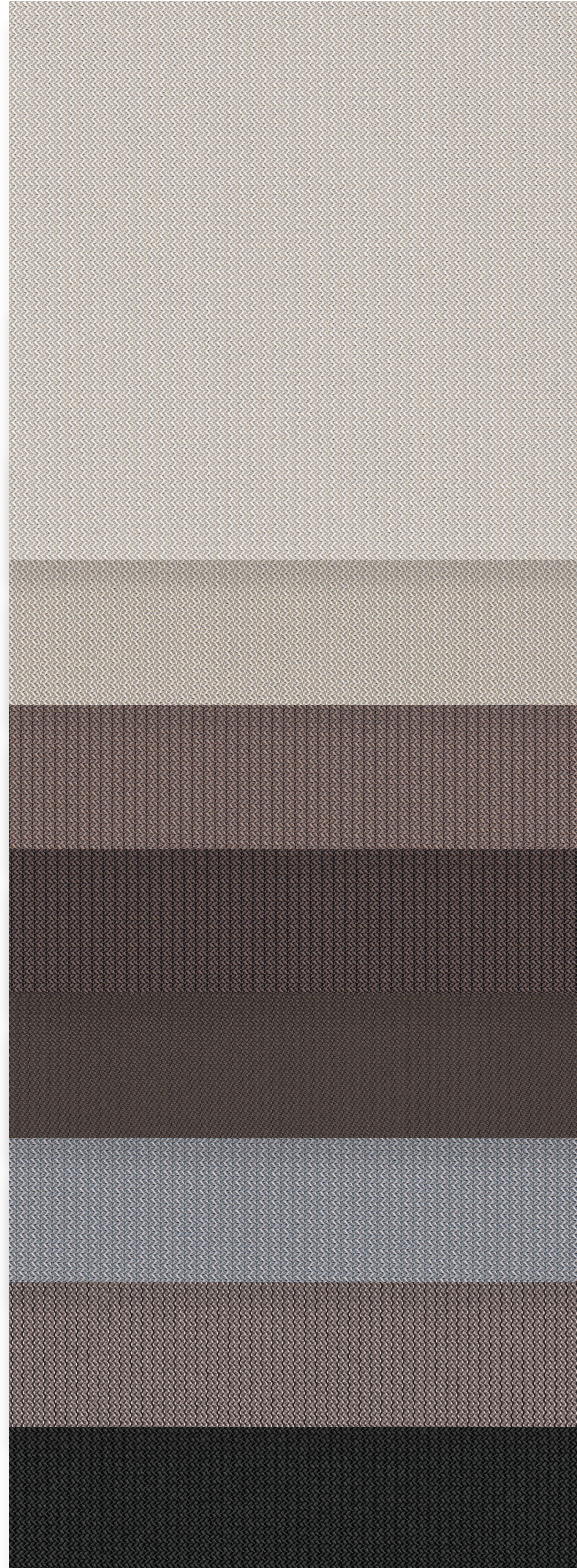
1%

A00030 | Onyx



5%

A00030 | Onyx



000010  
Sand

000020  
Linen

000055  
Mushroom

000071  
Suede

000015  
Dusk

000022  
Stone

000001  
Pewter

A00030  
Onyx

Fabrics sampled on waterfall are 5% openness.

# Fabric Specifications

Fabric Style	UV Blockage	Composition	Standard Roll Length	Warranty
Warp Knit	Approximately 95%-99%	100% Polyester, 89% Recycled Content	50 ly (46 lm)	5 Year Interior



## Available Colors

Sand	Linen	Mushroom
Suede	Dusk	Stone
Pewter	Onyx	

Openness	Item No.	Width	Weight oz/yd <sup>2</sup>	Thickness inches
1%	002501	118"	5.87	0.019
5%	002505	118"	5.01	0.017



Looking for fenestration data?  
Scan here for GreenScreen Revive® resources & technical data.

[MermetUSA.com](http://MermetUSA.com)



**Mermet Corporation**

5970 N. Main Street | Cowpens, SC 29330  
1.866.902.9647 | [info@MermetUSA.com](mailto:info@MermetUSA.com)

Product performance and specification data is subject to change, visit [www.MermetUSA.com](http://www.MermetUSA.com) for the most current information