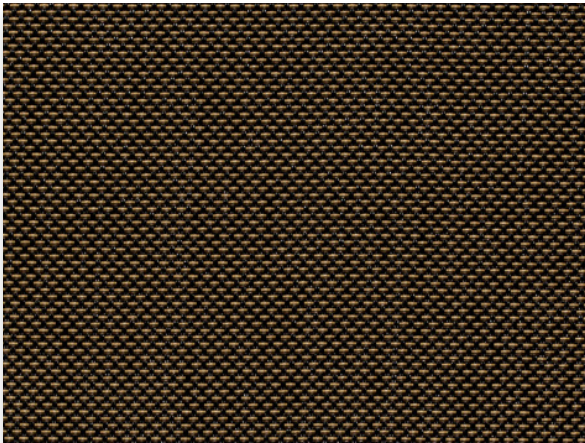
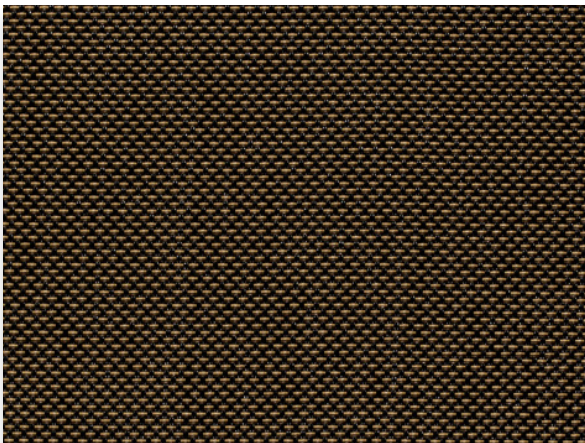


Natté™

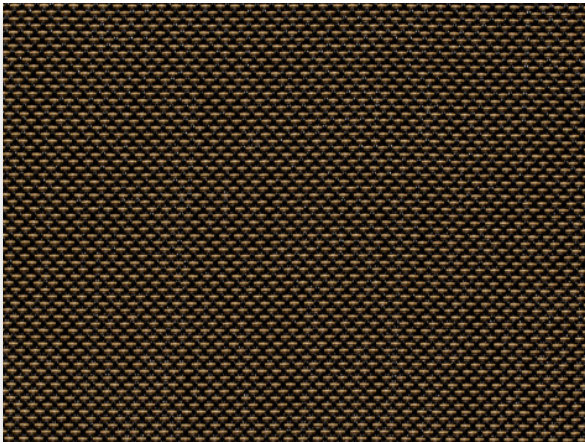
Outdoor Solar Screen | 3% 5% 10% openness



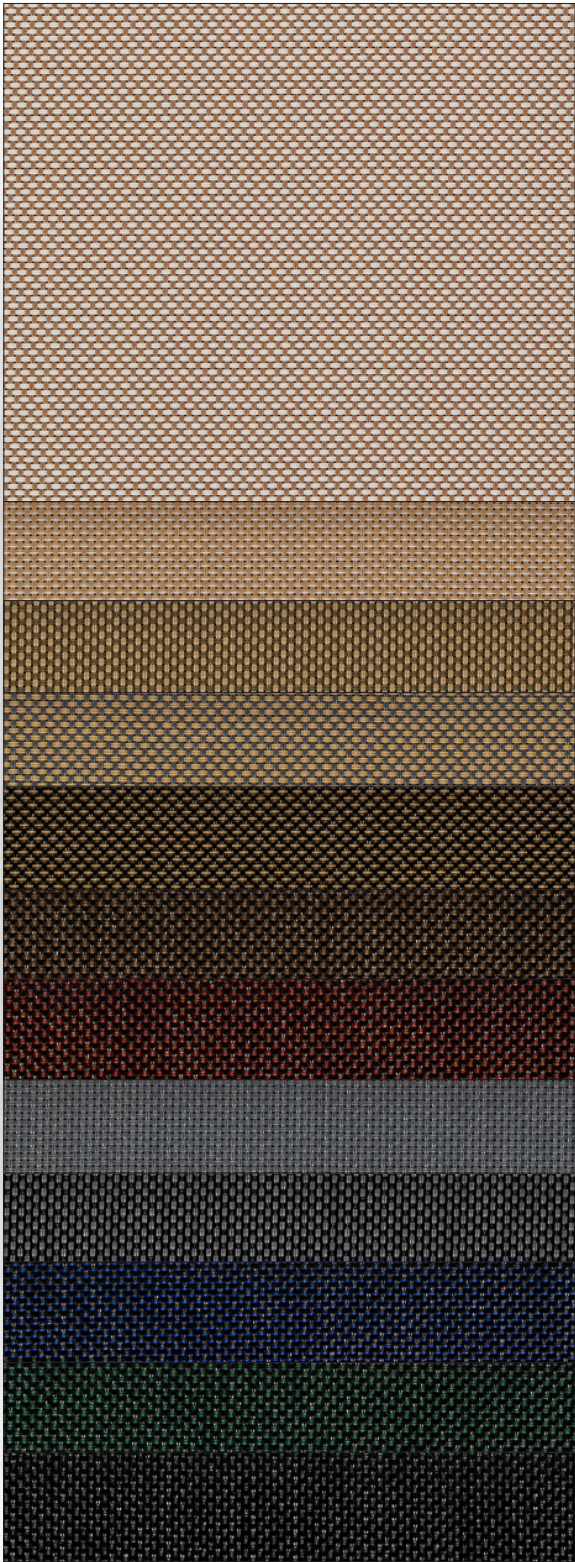
3% Charcoal/Cocoa-Fawn



5% Charcoal/Cocoa-Fawn



10% Charcoal/Cocoa-Fawn



- Sable/White
- Sable/Sable-Fog
- Sable/Wood
- Grey/Sable
- Charcoal/Cocoa-Fawn
- Charcoal/Cocoa
- Charcoal/Garnet
- Grey/Grey
- Grey/Charcoal
- Charcoal/Charcoal-Navy
- Charcoal/Forest
- Charcoal/Charcoal

Fabrics sampled on waterfall are 5% openness.

Fabric Specifications

| Fabric Style | UV Blockage | Composition | Standard Roll Length | Warranty |
|--------------|-----------------------|-----------------------------|------------------------|--------------------------------------|
| Basketweave | Approximately 90%-97% | 42%Fiberglass, 58% Vinyl | Rolls of 30 ly (27 lm) | 10 Year Exterior 10 Year Interior |

Natte™

Available Colors

| | | |
|------------------------|---------------------|-------------------|
| Sable/White | Sable/Sable-Fog | Sable/Wood |
| Grey/Sable | Charcoal/Cocoa-Fawn | Charcoal/Cocoa |
| Charcoal/Garnet | Grey/Grey | Grey/Charcoal |
| Charcoal/Charcoal-Navy | Charcoal/Forest | Charcoal/Charcoal |

| Openness | Item No. | Width | Weight oz/yd ² | Thickness inches |
|----------|----------|-------|------------------------------|---------------------|
| 3% | 004503 | 122" | 16.4 | 0.023 |
| 5% | 004505 | 122" | 14.1 | 0.022 |
| 10% | 004500 | 122" | 13.5 | 0.021 |



Looking for fenestration data?
Scan here for Natte™ resources & technical data.

MermetUSA.com



Mermet Corporation

5970 N. Main Street | Cowpens, SC 29330
1.866.902.9647 | info@MermetUSA.com

Product performance and specification data is subject to change, visit www.MermetUSA.com for the most current information